

SLIDE CYLINDER

TL-20, 30, 40, 50

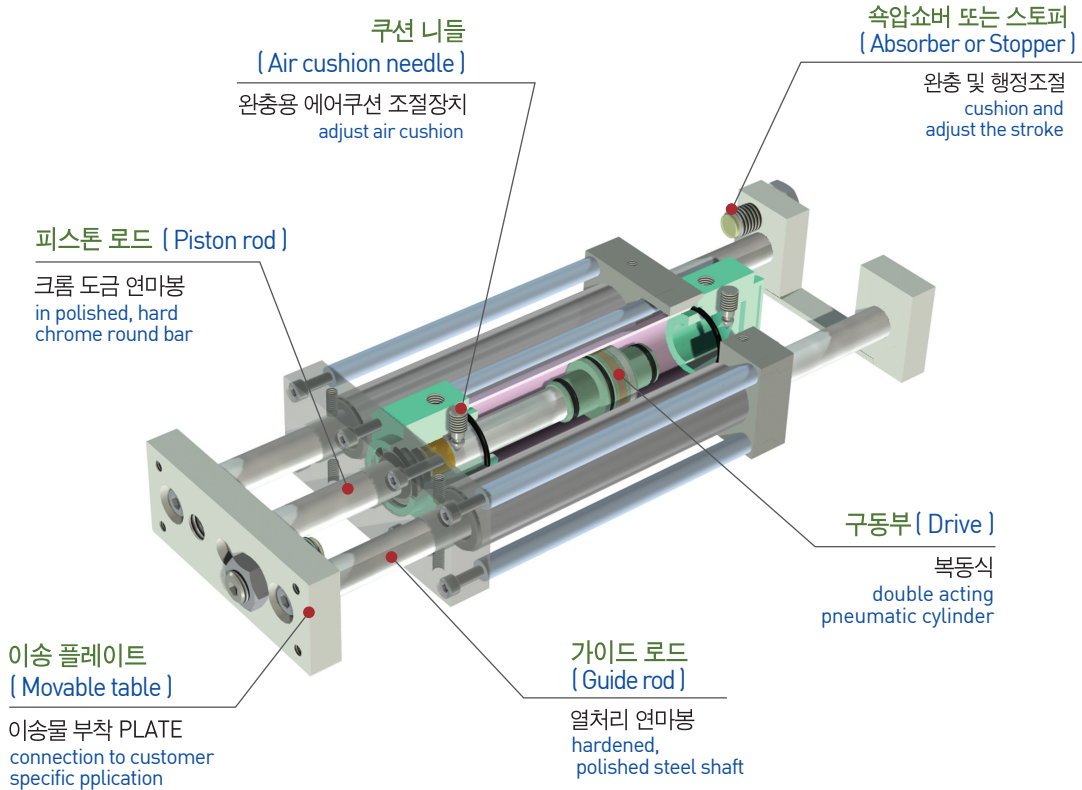


특징 (Character)

- 2-가이드 + 자체제작 실린더 사용의 고강성 슬라이드 유니트
2-guide + high rigidity slide unit of using self-produced cylinder
- 에어 쿠션 기본 부착으로 내충격성 강화
Strengthened impact resistance through attaching air cushion
- BALL BUSH 4개소 내장으로 고정도 실현
Realized high precision through built ball bush 4 parts
- 위치검출용 마그네틱 센서 부착가능
Magnetic sensor is available for end position sensing

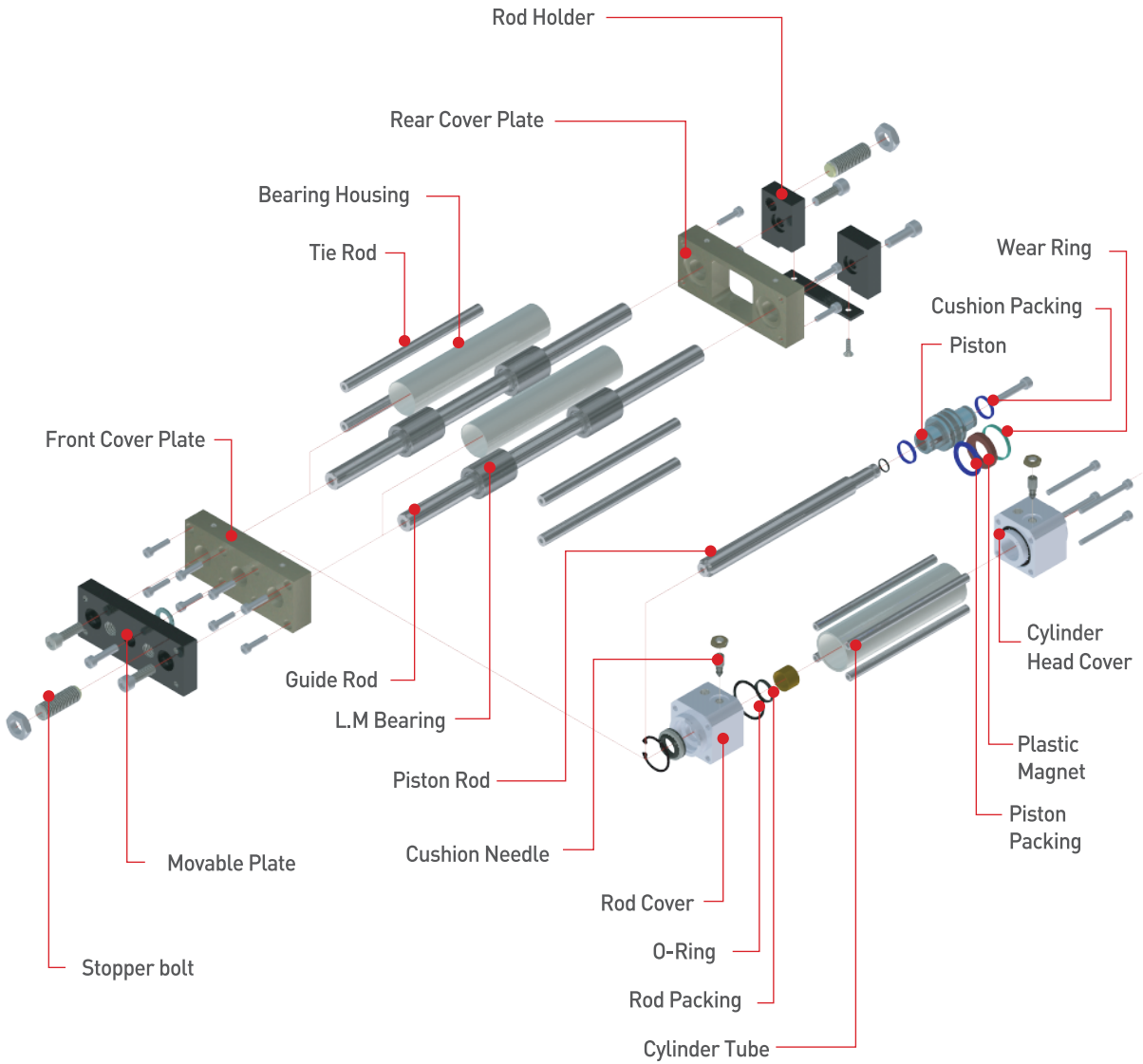


플레이트 이송형 3로드 실린더 (Plate transfer type, 3 rod)



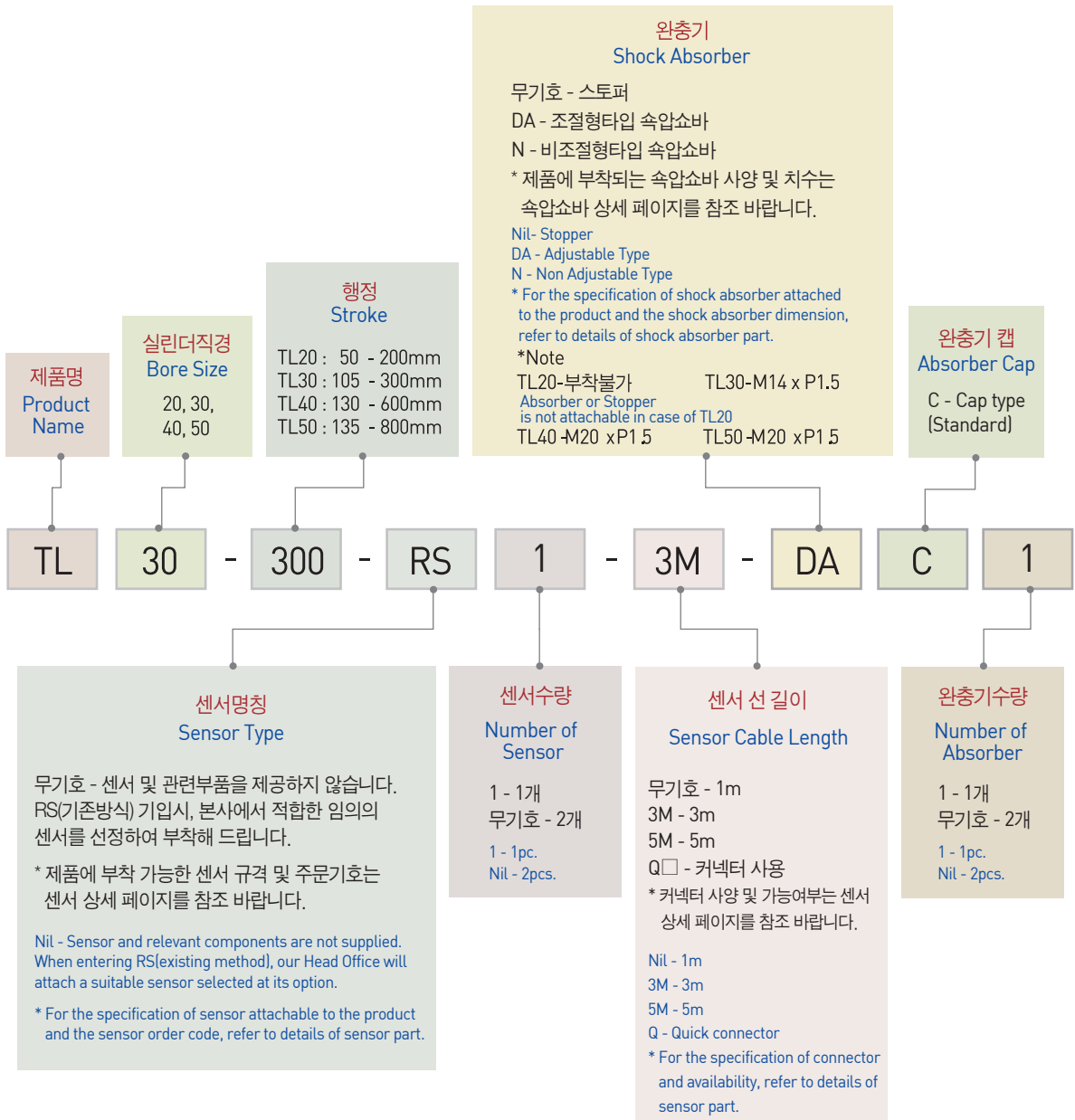
부품분해도 (Exploded view)

※ 본 분해도는 한 제품을 예시하였으므로 기종별로 차이가 있을 수 있습니다.
 ※ This is exploded view illustrates a certain product only. The contents may vary by product models.



RH
RHC
RHW
RHS
TL
GC
SC
JC
NE
NT
DG
NO
NF
JO
JSR9
JCR9

주문기호 (Ordering Code)



☐ 제품사양 (Specification)

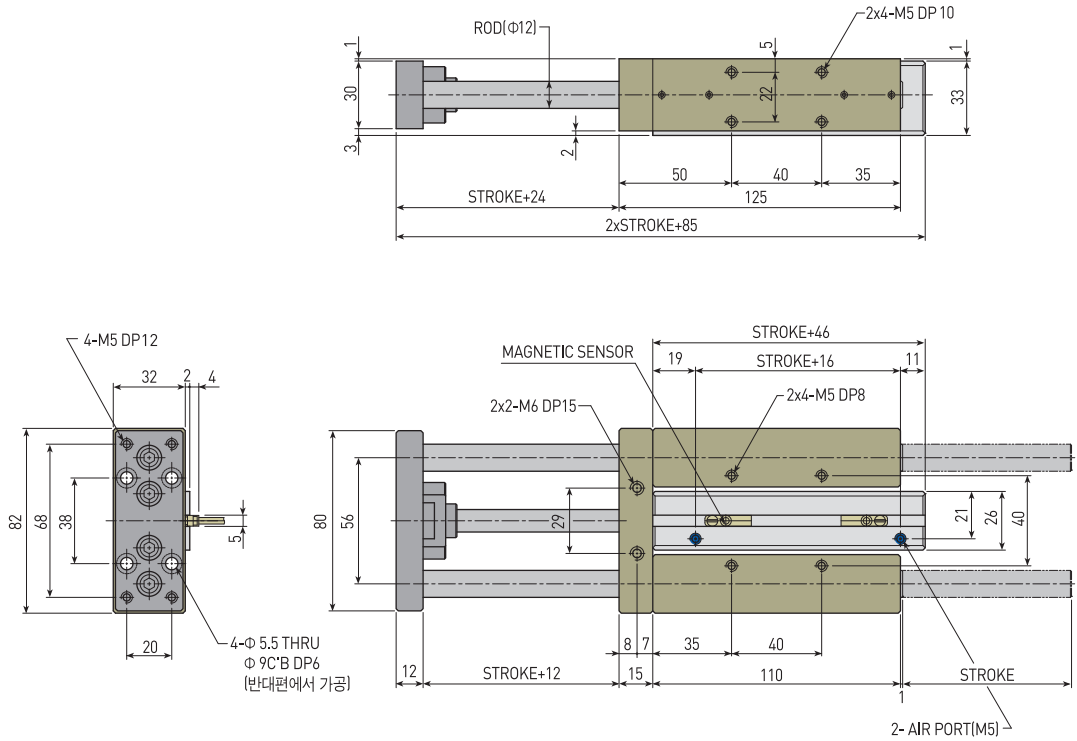
P=공기압력(bar) , St=행정(mm)
P=Air Pressure[bar] , St=Stroke[mm]

제품명칭 Products Name	TL20	TL30	TL40	TL50	단위 Unit
최대행정 Max Stroke	200	300	600	800	mm
최소행정 Min Stroke	50	105	130	135	mm
전진추력 Push Power	30.80P	68.67P	123.61P	192.28P	N
후진추력 Pull Power	23.05P	58.27P	103.01P	161.87P	N
최대이송속도 Max. Speed	150	150	150	150	mm/sec
최소이송속도 Min. Speed	30	30	30	30	mm/sec
제품중량 Weight	1+0.004St	3.73+0.015St	5.5+0.023St	8.5+0.041St	kg
배관접속구 Fitting size	M5	PF(G) 1/8	PF(G) 1/8	PF(G) 1/4	
1사이클당 공기소모량 Air consumption quantity	0.5xSt	1.2xSt	2.3xSt	3.6xSt	cm ³
반복정밀도 Repetition Accuracy	±0.1				mm
사용압력 Operating pressure	3 to 7				bar
주위온도 Ambient temperature	-5 to 60				℃
윤활 Lubrication	불필요 Needless				

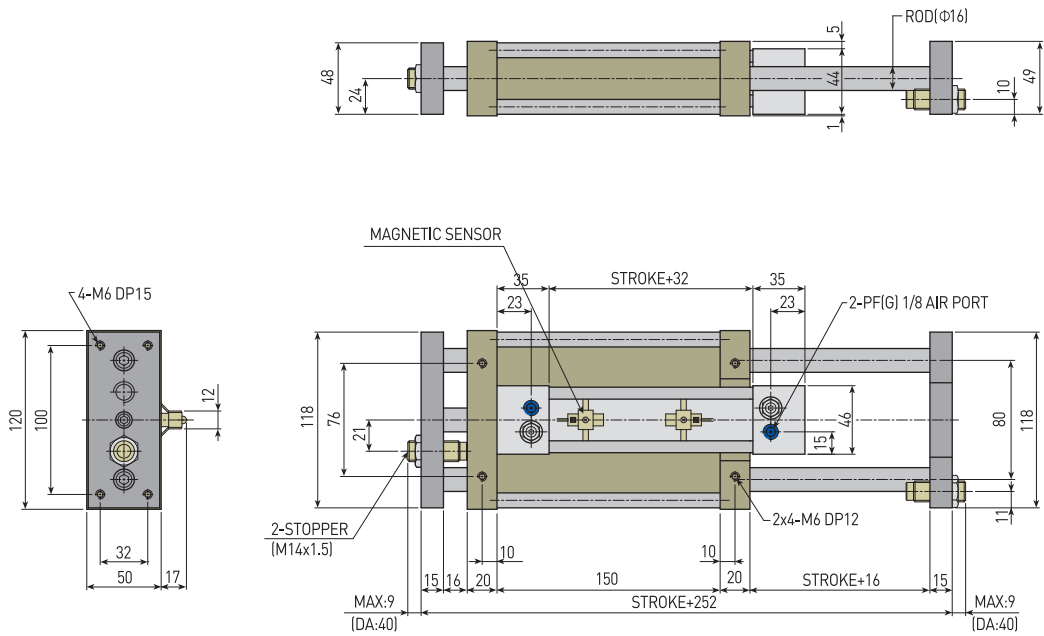
RH
RHC
RHW
RHS
TL
GC
SC
JC
NE
NT
DG
NO
NF
JO
JSR9
JCR9

☐ NOTE

TL-20

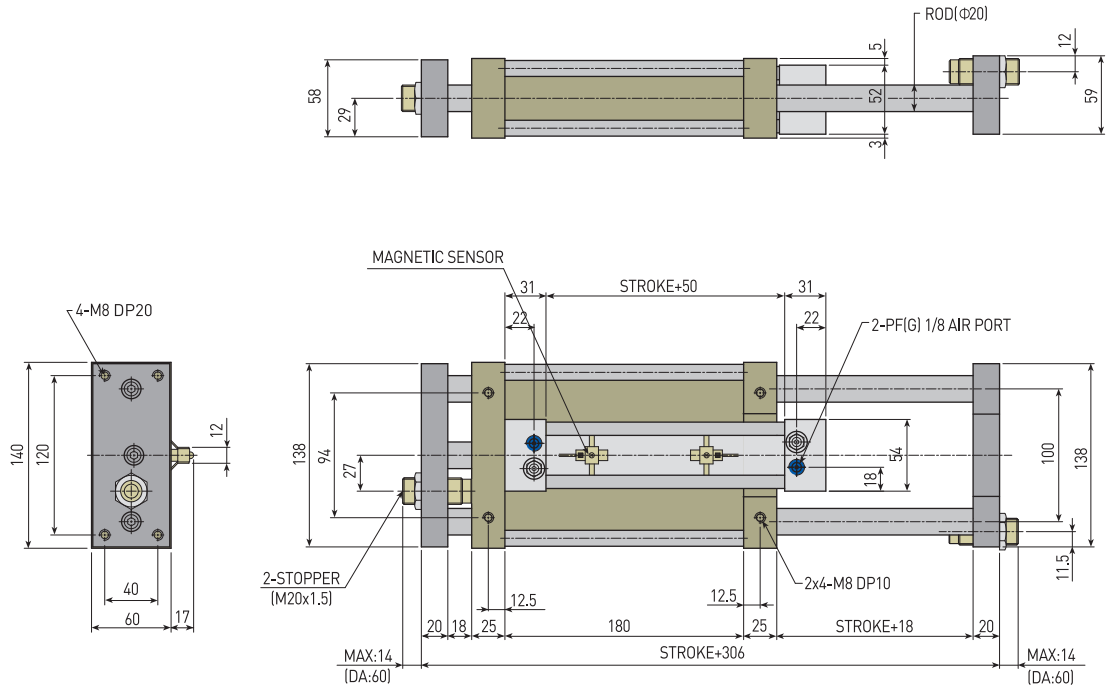


TL-30



TL-40

- RH
- RHC
- RHW
- RHS
- TL**
- GC
- SC
- JC
- NE
- NT
- DG
- NO
- NF
- JO
- JSR9
- JCR9



TL-50

